

## High efficiency Flexible LED Strip

### GMBT1000-160W2835

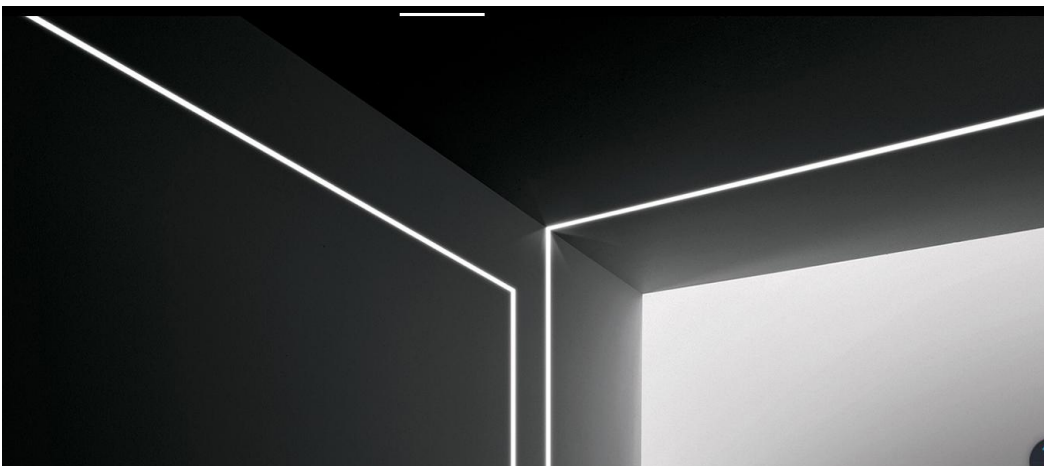


#### ◆ Features

- Epistar chips High brightness LM-80 TESTED;
- Always use one bin for one CCT. make the color uniform, good consistency.
- Different IP Grade flexible led strips are available. IP20 IP65(Silicone or PU coated) IP67(Tube encased) IP68(Silicone extrusion)
- Wide CCT and CRI range are available.
- Double layer 3oz rolled copper FPCB with good heat dissipation
- 3M adhesive tape for easy installation
- DC12V/DC24V Low voltage input
- Max series is 30meters. No drop voltage on the whole reel.Great!!!!

#### ◆ Applications

Architectural Lighting



#### ◆ Parameters

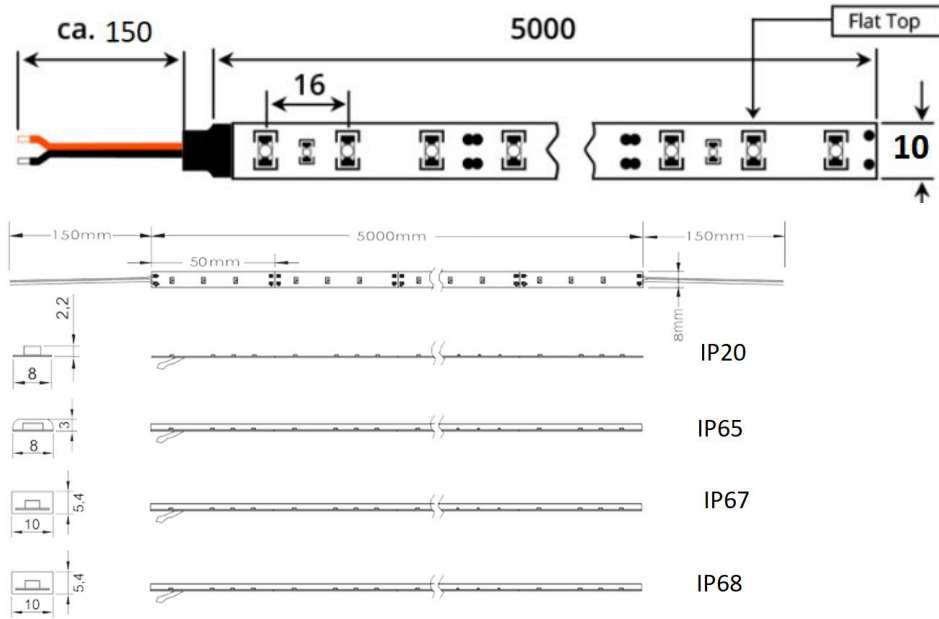
Part No.	Led Type	Led No./m	CCT	Lumen/m	CRI	Working Voltage	Power	Viewing Angle
GMBT1000-160W2835	2835	160	2200-9000k	1872	RA>90	DC12V/DC24V	14.4W	120°

Factory Add: Floor 5, Yushan Industrial Park C Building, Songbai Road No.2079, Shiyuan Town, Bao'an, Shenzhen, China

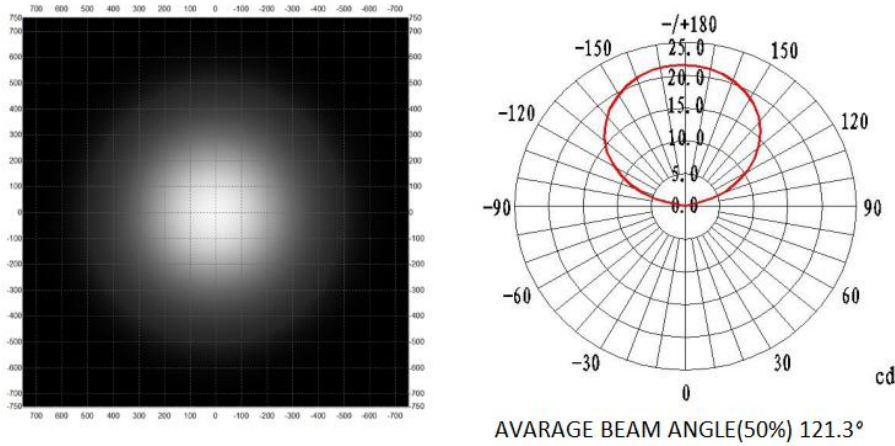
Tel/Fax: +86-755-27655320; Website: [www.heyday-led.com](http://www.heyday-led.com); E-mail: [cathy@heyday-led.com](mailto:cathy@heyday-led.com); Mobile: +86 134 1074 1216;

Watsapp: +86 134 1074 1216; Contact Person: Cathy Zhang

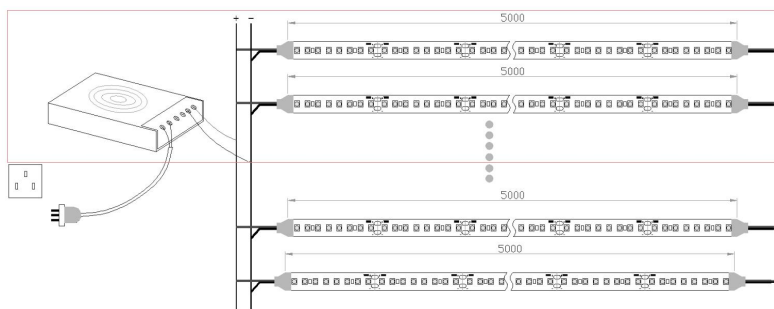
◆ Dimensions (mm)



◆ Lighting Distribution Curve



◆ Connection Guide:



◆ Installation Guide:

Double-sided adhesive tape attached at backing of the strip

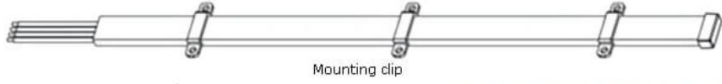
Double-sided Tape



Attached and fixed directly



Extra rubber mounting clips are provided for IP67 and IP68 strip (2pcs/meter)



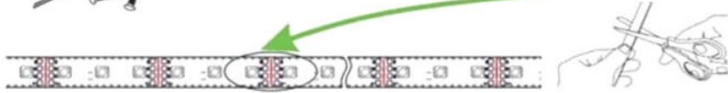
Mounting clip

Cut the strip every 3LED for 12V version;  
6LED for 24V version.



Fixed with screws by clips

Cut along marks on strip



◆ **Attention:**

- The strip itself and all its components could not be mechanically stressed.
- Assembly must not damage or destroy conducting paths on the circuit board. The installation must be carried out by qualified personnel;
- Please check correct electrical polarity before connection. Wrong polarity may destroy the strip
- The max. length could not be over 5 meters when serial connection. If length is over 5 meters, you could see voltage drop which can cause hazardous overload and damage the strip
- Please ensure that the transformer could bear the total load.
- Pay particular attention to the conductive slopes, avoid bending the strip so as not to slice them;  
Cut the strips only along the appropriate marks;
- Strips must be installed in a suitable environment. It is the user's responsibility to provide suitable protection against corrosive agents such as moisture and condensation and other harmful elements

Before any application it is advisable to clean the surface where the strip will be glued; must be glued to a thermal-conductive surface, preferably aluminum

◆ **Package information:**

5meters per reel; 1 reel per aluminum foil bag; 100bags per carton; Total 500meters in one carton.

Carton size: 46\*27.5\*28.5cm; N.W: 11.5±5%Kg; G.W: 12.5±10%Kg

